

UNITE

The Pilot Accounts of UNITE: Switzerland

Ecoplan, Infrac and IER



Stefan Suter, Ecoplan

- ▶ **Assessment of the Quality of the Accounts**
- ▶ **Results: 1998 and Trend 2005**
- ▶ **Policy Implications and Perspectives**
- ▶ **Conclusions: Why Accounts?**

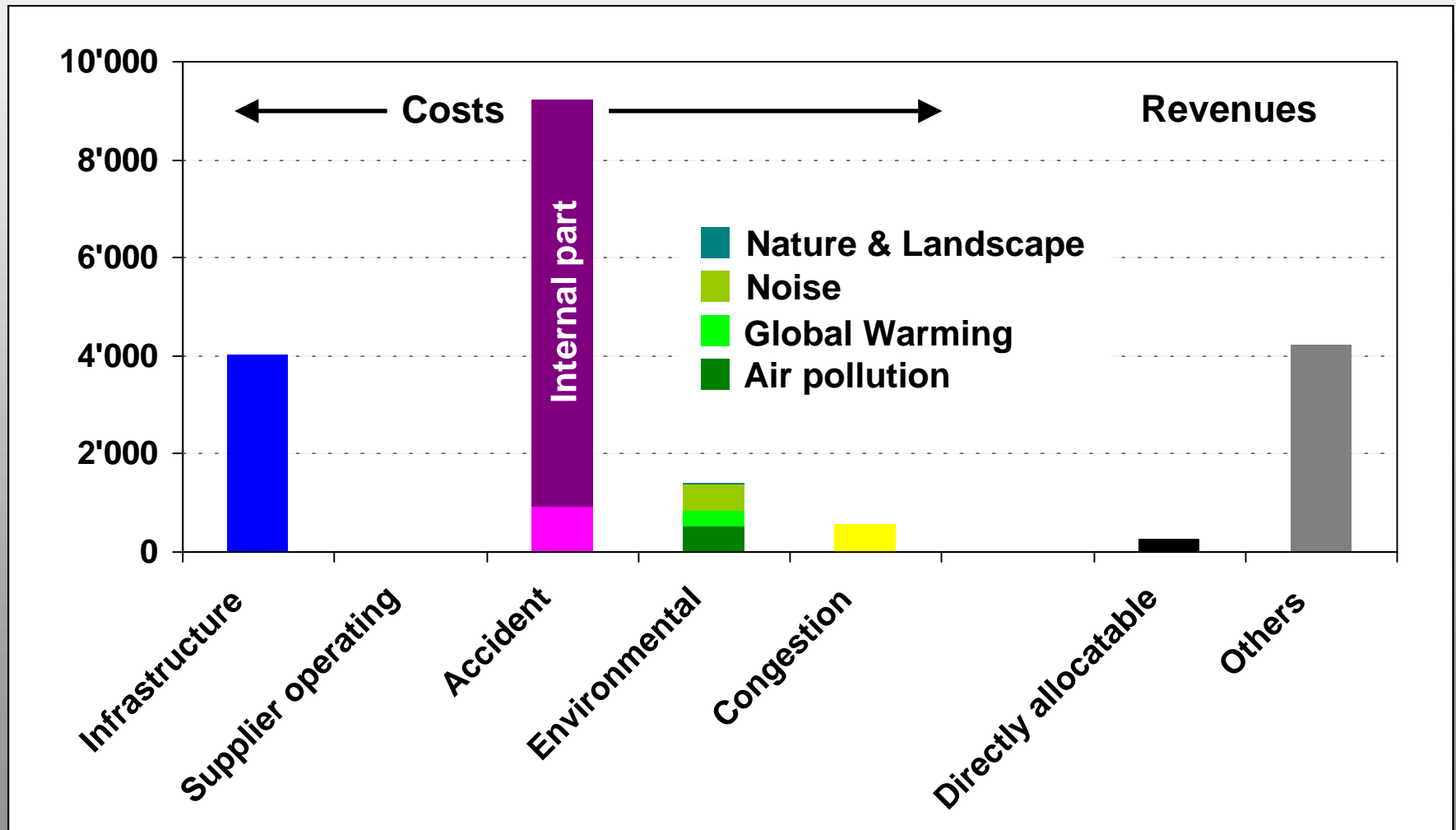
Assessment of the Quality of the Accounts

ECOPLAN

	Infra-structure	Supplier operating	Accident	Environ-mental	Con-gestion	Revenues, subsidies
Road	Dark Gray	Yellow	Medium Gray	Light Gray	Medium Gray	Dark Gray
Rail	Dark Gray	Dark Gray	Light Gray	Very Light Gray	Medium Gray	Dark Gray
Urban PT	Light Gray	Dark Gray	Medium Gray	Very Light Gray	Medium Gray	Dark Gray
Aviation	Medium Gray	Yellow	Medium Gray	Light Gray	Medium Gray	Medium Gray
Inland Waterways	Light Gray	Yellow	Yellow	Yellow	Yellow	Light Gray

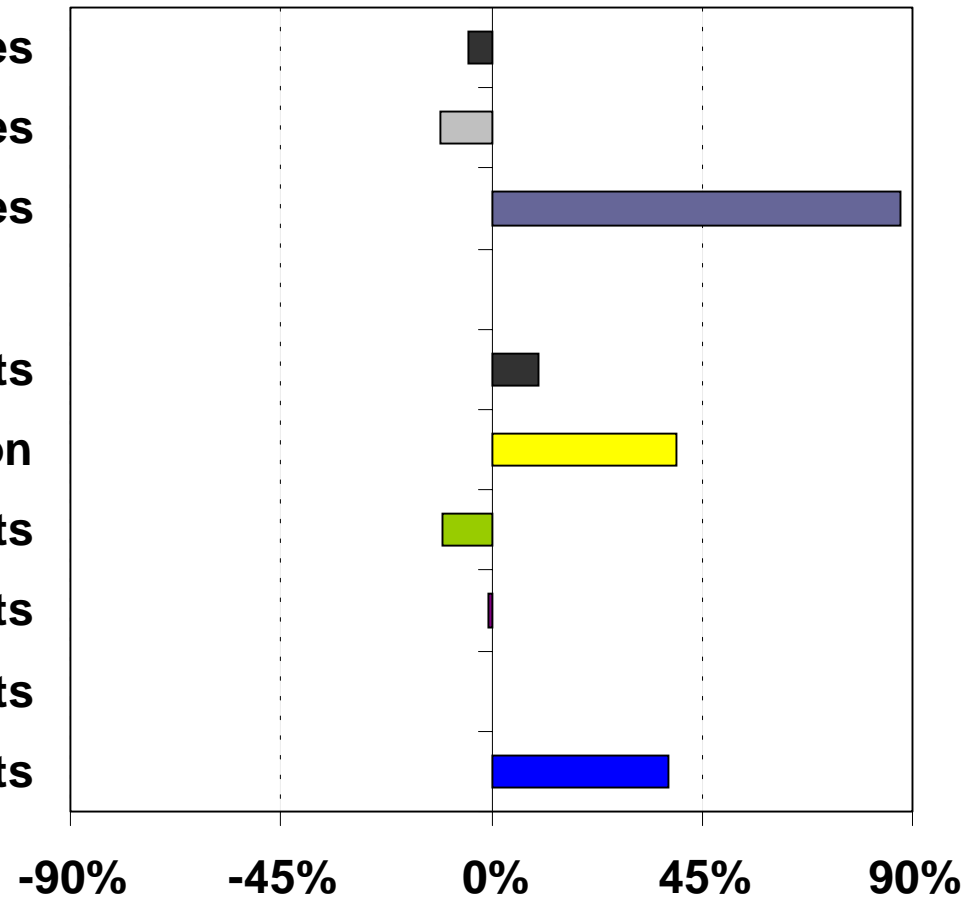
Swiss Road Transport Account 1998 (€ million)

ECOPLAN



Total revenues
Other revenues / subsidies
Directly allocatable revenues

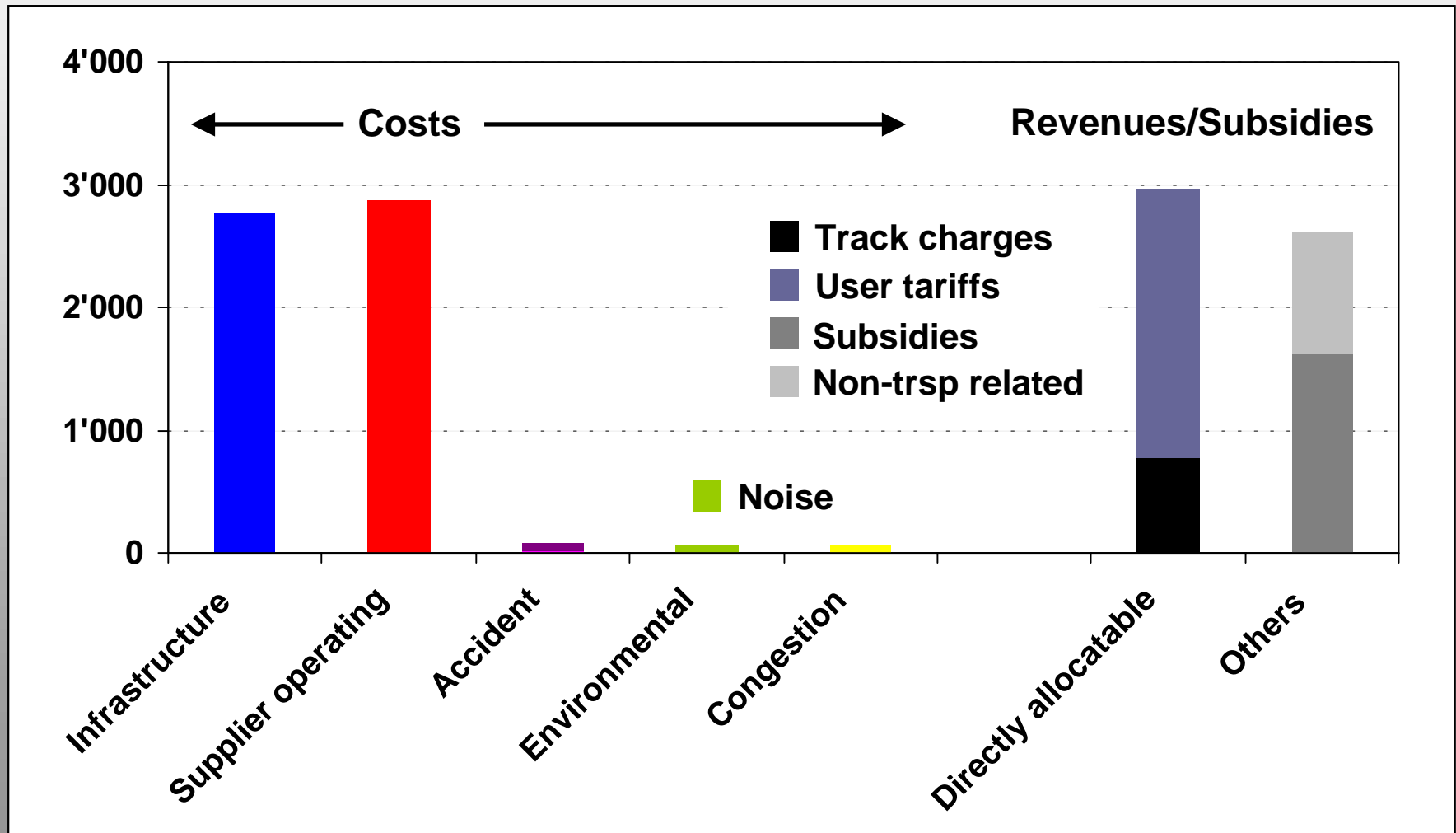
Total costs
Congestion
Environmental costs
Accident costs
Supplier operating costs
Infrastructure costs

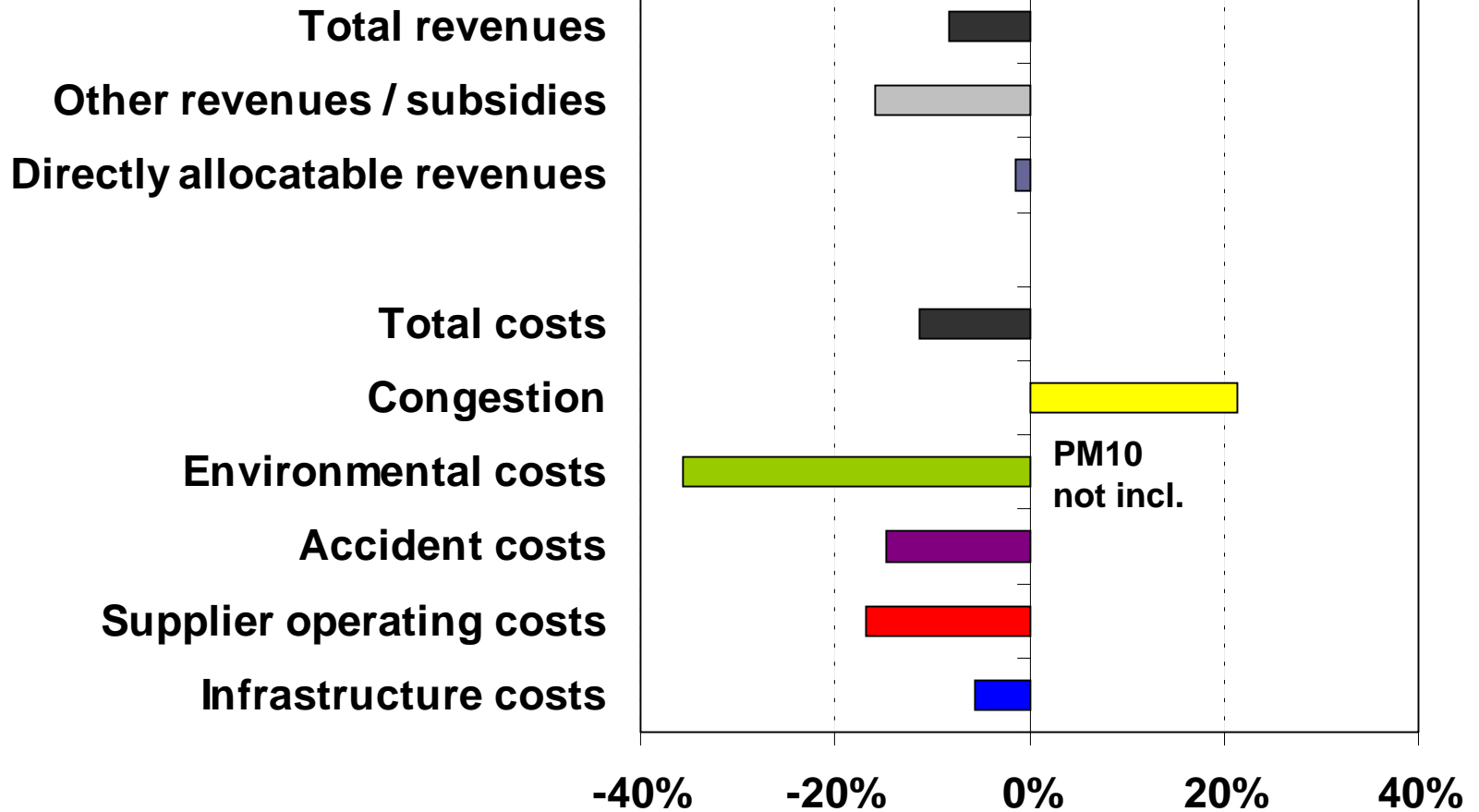


- ▶ **Accident costs: Relevance of traffic safety measures**
- ▶ **Infrastructure cost recovery: New funds needed**
- ▶ **Congestion: The “coming” issue**
- ▶ **External costs: Need for internalisation in car traffic**
- ▶ **Methodology: Treatment of uncertainty?**
- ▶ **Data: Closing the gaps**

Swiss Rail Transport Account 1998 (€million)

ECOPLAN

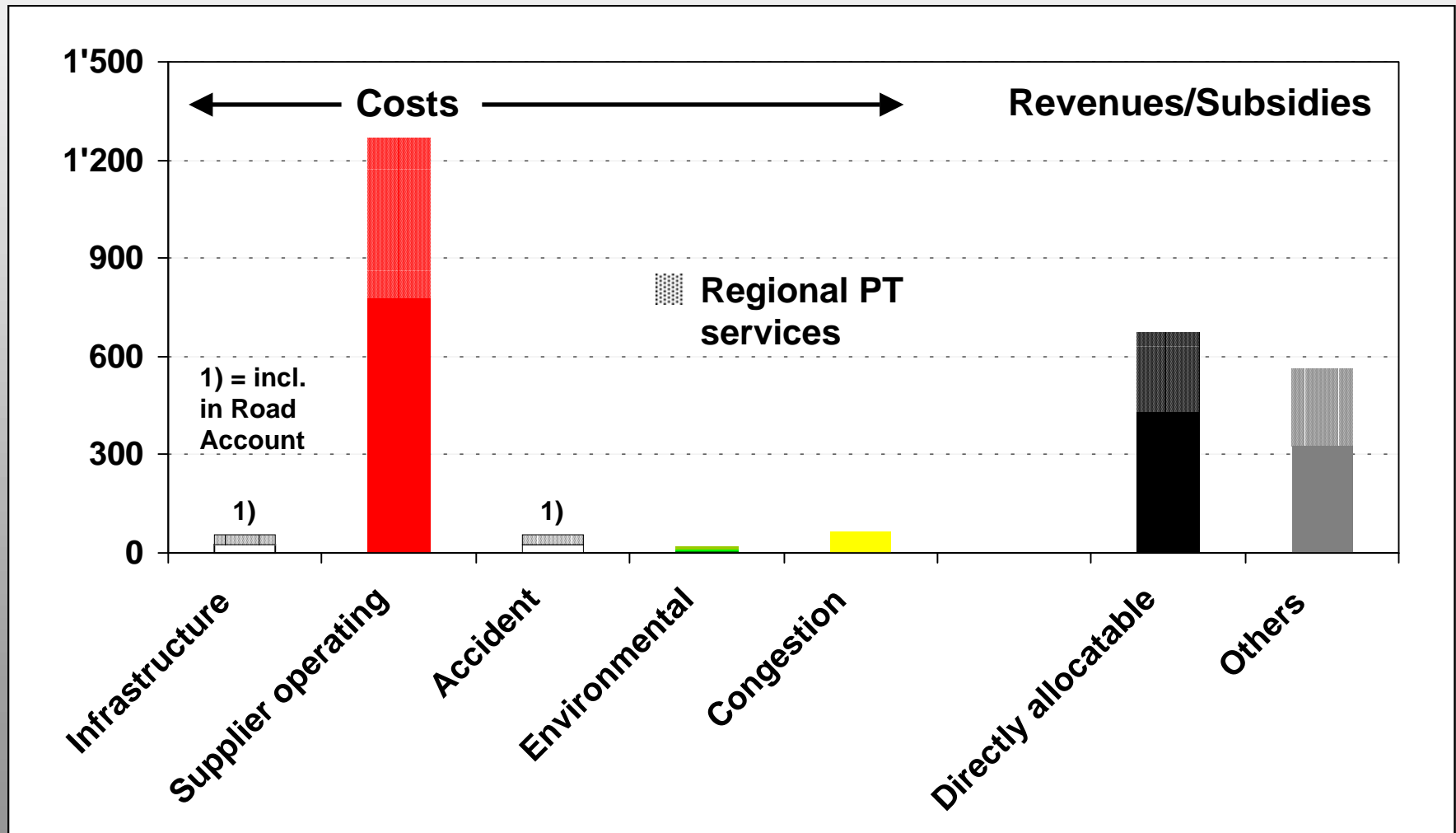




- ▶ **Subsidies: Acceptable level?**
- ▶ **Cost recovery: Improvement - if productivity further grows**
- ▶ **External costs: Air pollution due to PM10**
- ▶ **Data: Closing the gaps (PM10)**

Swiss Urban Public Transport Account 1998 (€million)

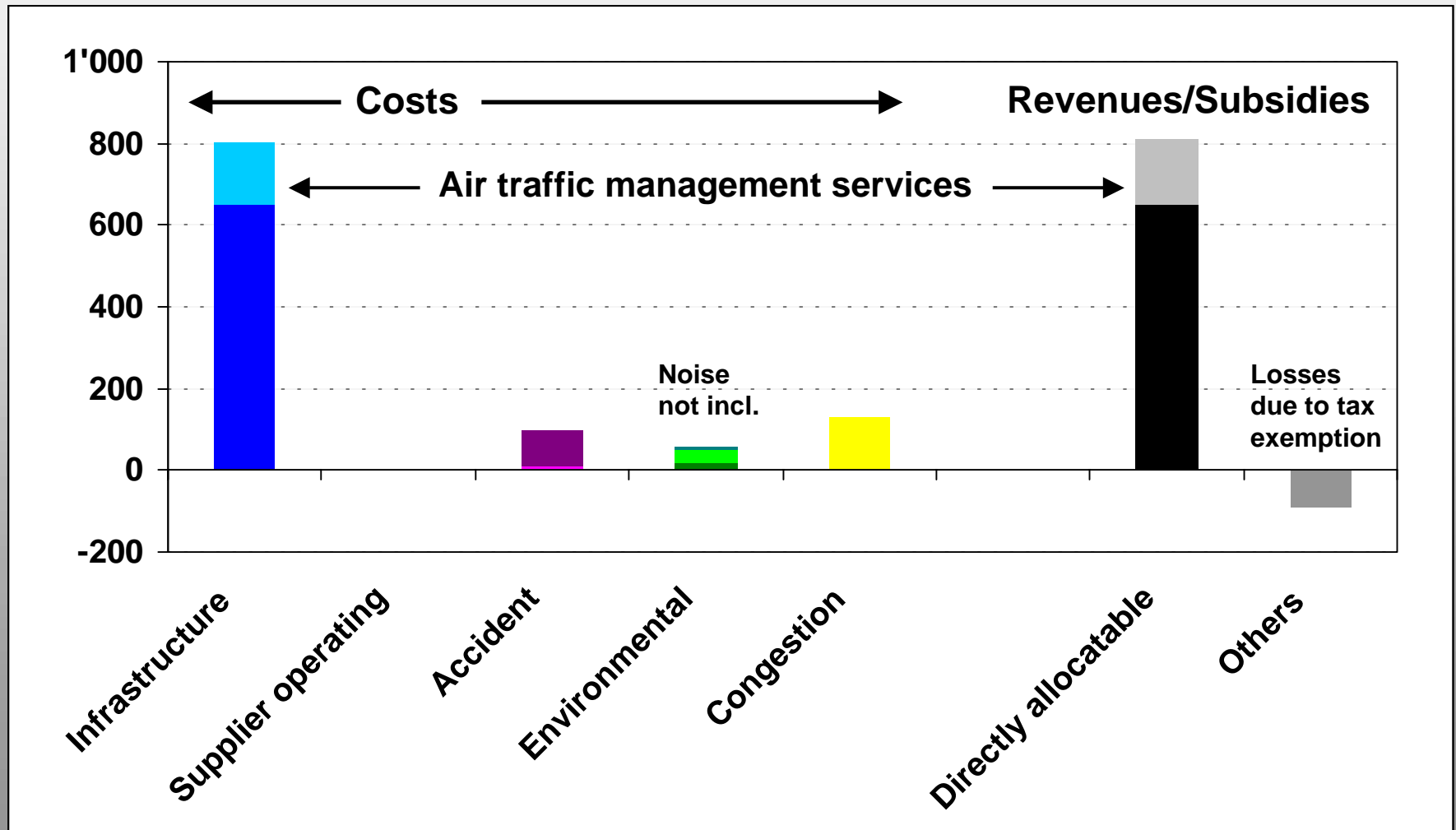
ECOPLAN

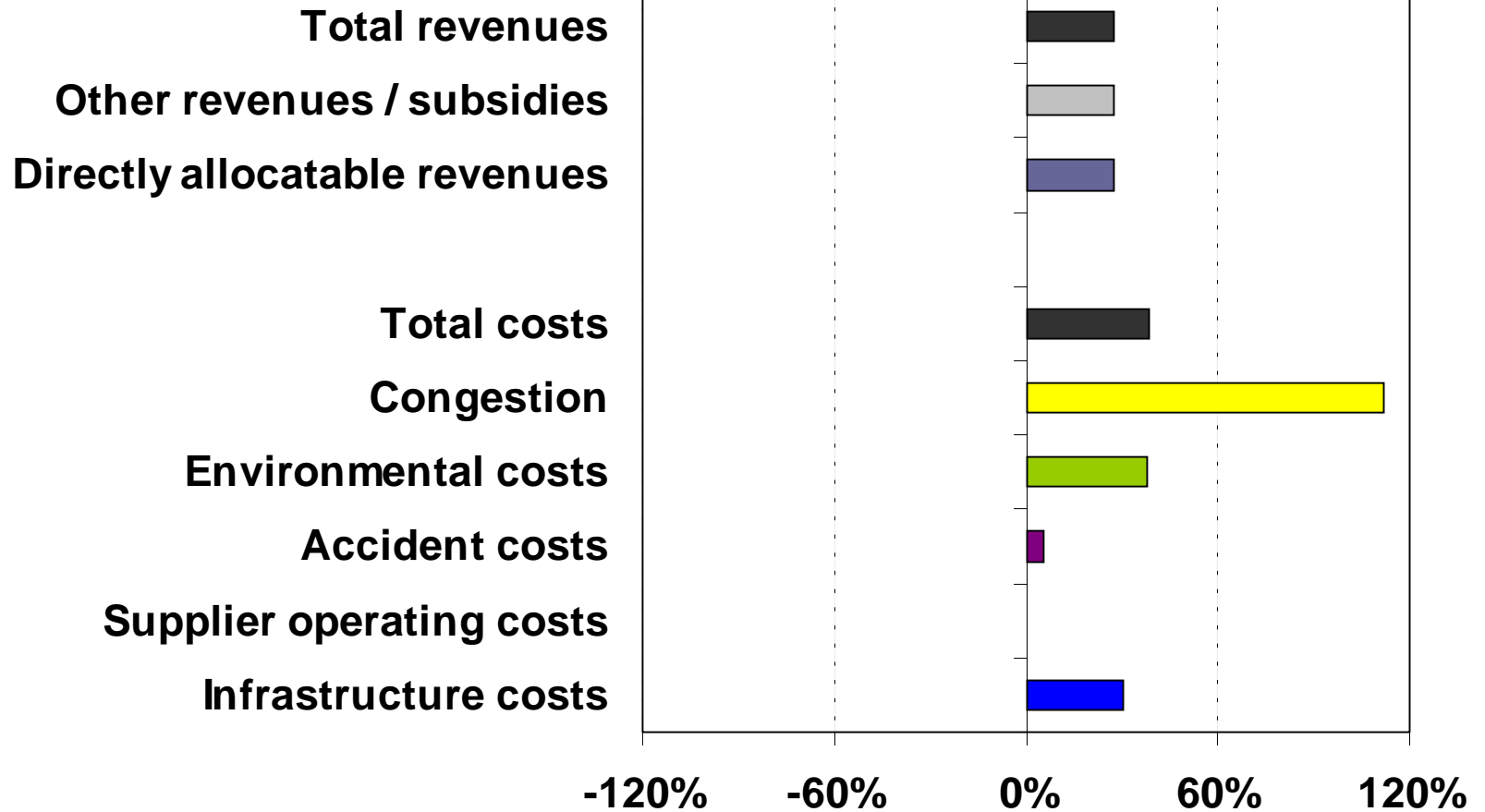


- ▶ **Perspective 2005: Increase of congestion and financial needs**
- ▶ **New financing solutions: Confirmation of current policy**
- ▶ **Data: Closing the gaps – if treated as specific mode**

Swiss Air Transport Account 1998 (€million)

ECOPLAN

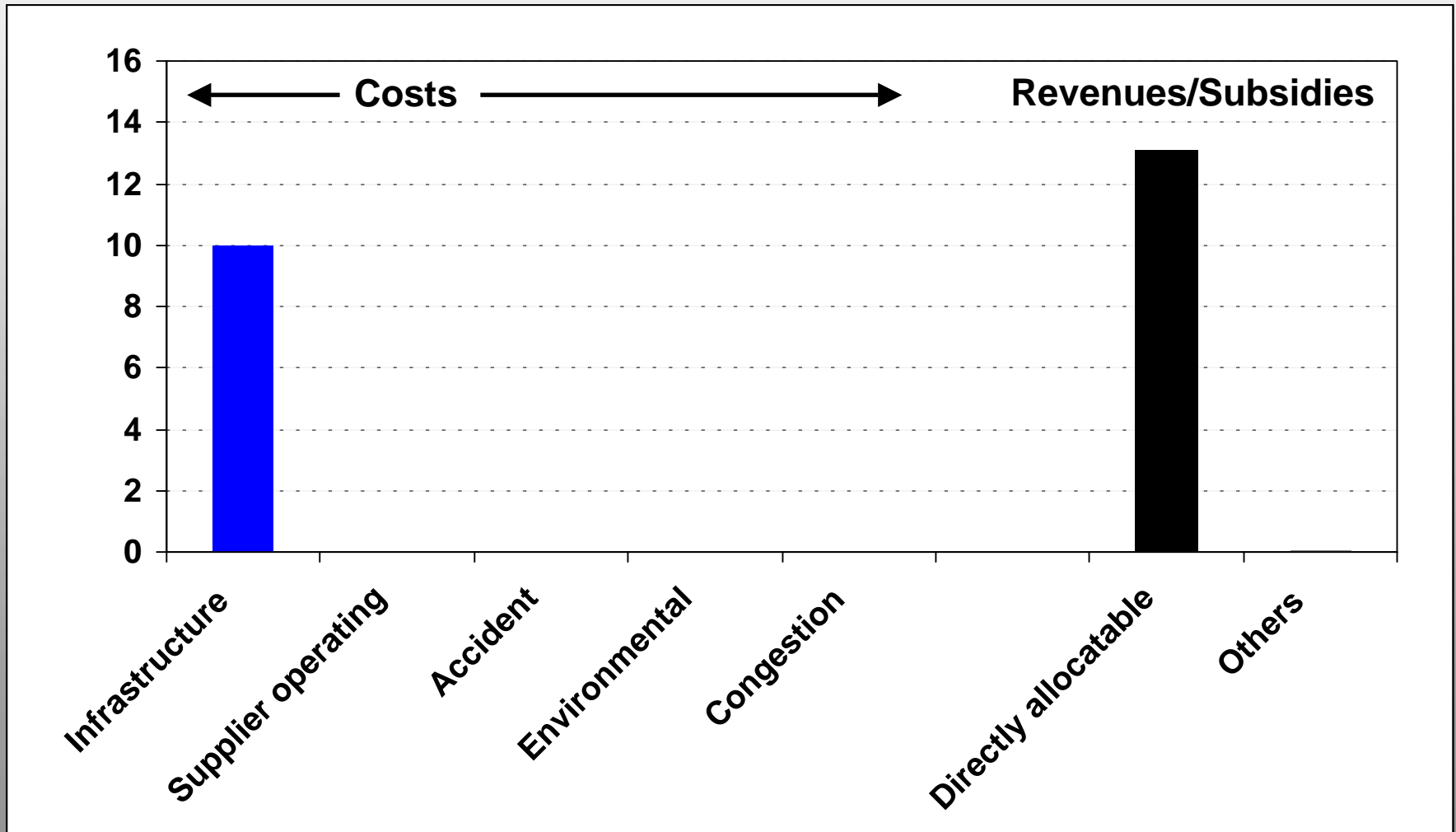




- ▶ **Growth with no limits?**
- ▶ **Congestion: Need for capacity increase**
- ▶ **Environmental costs: Need for national and international action**
- ▶ **Taxation: “Unfair” competitive advantage compared to other modes?**
- ▶ **Data: Closing the gaps**

Swiss **Inland Waterway** Account 1998 (€million)

ECOPLAN



- ▶ **Budget constraints: More than SMCP/CBA needed**
- ▶ **Cost and revenue transparency**
- ▶ **Cost recovery: Distortions through subsidies**
- ▶ **Possibilities of benchmarking**
- ▶ **Need for policy action: Pricing / financing and others**
- ▶ **Design of the policy measures**
- ▶ **Basis for impact analysis (e.g. regional, social)**

UNITE

The Pilot Accounts of UNITE: Switzerland

Ecoplan, Infrac and IER



Stefan Suter, Ecoplan